



Established 1925

KANSAS GEOLOGICAL SOCIETY

# BULLETIN

Volume 88 Number 6

November—December 2013

## **IN THIS ISSUE**

### *Memorials:*

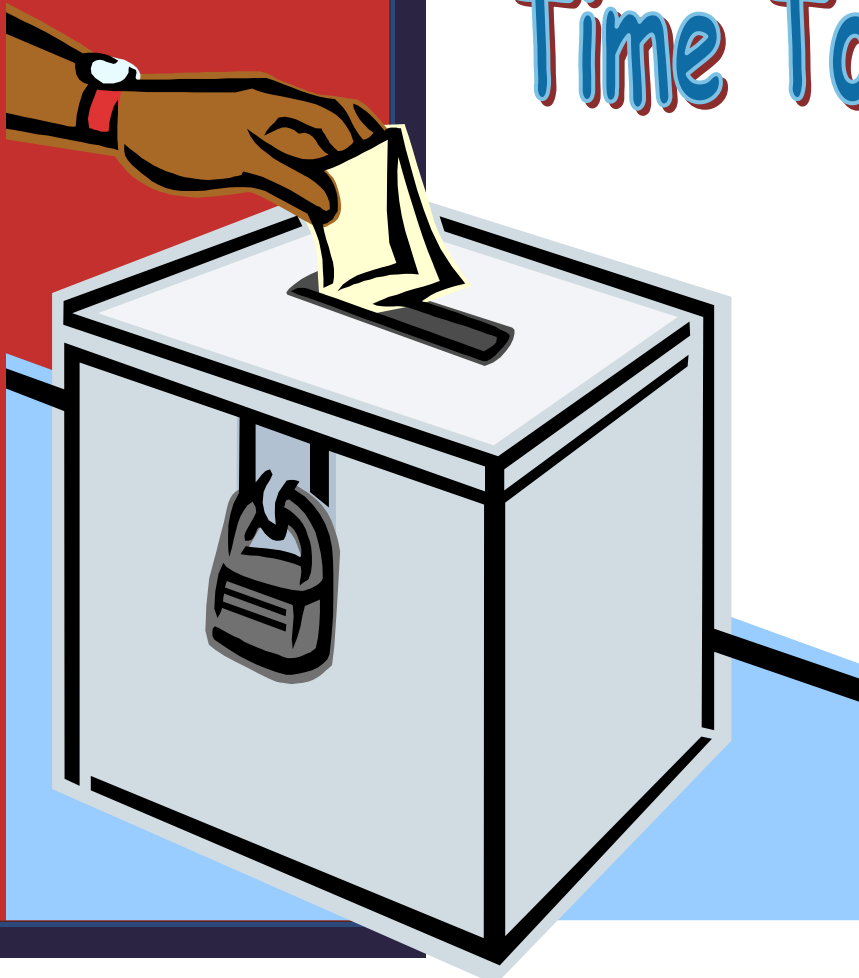
*Michael Mitchell*

*Dick Rowland*

*Page 10*

Meet The Candidates  
For  
KGS Board of Directors  
Pages 14-16

**Time To Vote**



# SEE THE ENERGY WITH TGS' DATA INTEGRATION SOLUTION

See and access all of your G&G data with Volant, TGS' geoscience data and application integration solution that:

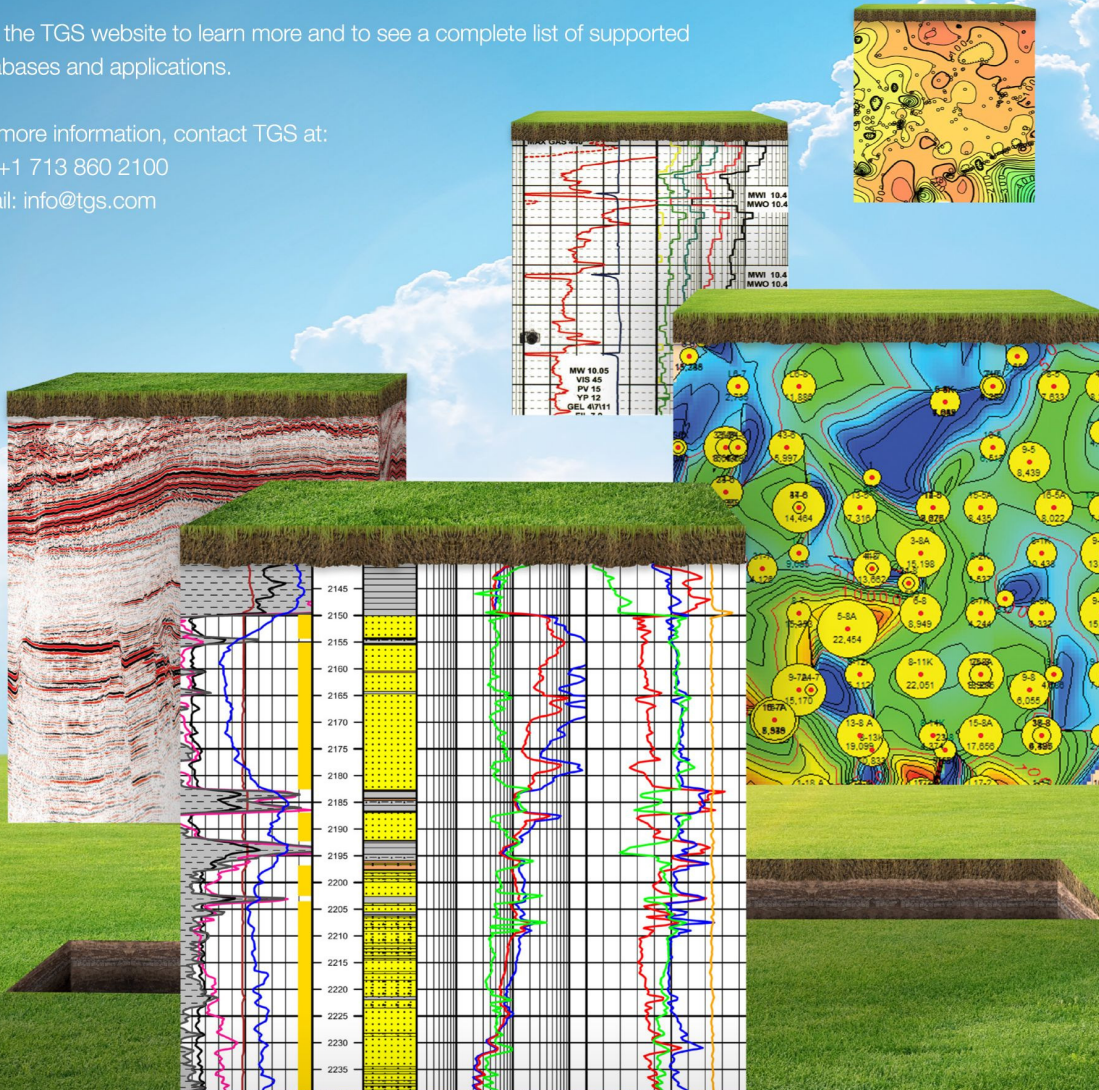
- Interconnects well and seismic data between geoscience databases and applications
- Reduces data duplication and maverick data purchasing
- Improves data governance by routing vendor data to corporate data stores

Visit the TGS website to learn more and to see a complete list of supported databases and applications.

For more information, contact TGS at:

Tel: +1 713 860 2100

Email: [info@tgs.com](mailto:info@tgs.com)



[WWW.TGS.COM](http://WWW.TGS.COM)

© 2013 TGS-NOPEC GEOPHYSICAL COMPANY ASA. ALL RIGHTS RESERVED.

**TGS**  See the energy.

# Table of Contents

---

## Features

Memorials.....10

## Departments & Columns:

KGS Tech Talks .....4  
President’s Letter .....7  
Advertiser’s Directory .....8  
From the Manager..... 9  
Professional Directory .....19 & 20  
Exploration Highlights .....24 & 25  
Kansas Geological Foundation Memorials.....26

### ON THE COVER:

Please review the candidates who are running for Board of Directors starting on page 14.  
Be sure to thank those who accepted the call to run for office!

---

### CALL FOR PAPERS

The Kansas Geological Society Bulletin, which is published bimonthly both in hard-copy and electronic format, seeks short papers dealing with any aspect of Kansas geology, including petroleum geology, studies of producing oil or gas fields, and outcrop or conceptual studies. Maximum printed length of papers is 5 pages as they appear in the Bulletin, including text, references, figures and/or tables, and figure/table captions. Inquiries regarding manuscripts should be sent to Rebecca Radford, [manager@kgslibrary.com](mailto:manager@kgslibrary.com) or mailed to 212 N. Market, Ste. 100, Wichita, KS 67202. Specific guidelines for manuscript submission appear in each issue of the Bulletin, which can also be accessed on-line at the Kansas Geological Society web site at <http://www.kgslibrary.com>

# SOCIETY Technical Meetings

Nov. 5—“*Hydraulic Fracturing 101*”, Hap Pinkerton, Halliburton

Nov. 19— “*Environmental Due Diligence for the Oil Field*” - Blaine Wood, GSI

Dec. 3—to be announced

Dec. 17— “*Legal Issue for Geologists*”, James P. Kelly

**Please remember to check the website  
For the most up to date information on Technical Talks**

**[www.kgslibrary.com](http://www.kgslibrary.com)**  
*(For the most information, go to the Tech Talks tab)*

## **Location for Technical Meetings**

*All KGS technical presentations are held at 12:30 p.m. at the **Wichita Bar Association**, located at **225 N. Market**, ground floor conference room, unless otherwise noted.*

*Note: For those geologists who need 30 points to renew their licenses, there will be a sign-in sheet at each presentation and also a certificate of attendance.*



## BOARD OF DIRECTORS

---

<b>PRESIDENT</b> Dave Clothier	<b>PRESIDENT-ELECT</b> Brian Fisher
<b>SECRETARY</b> Paul Ramondetta	<b>TREASURER</b> Bob Bayer
<b>DIRECTORS</b> Kent Scribner Tim Hellman Frank Mize	<b>ADVISORS</b> Kent Crisler Jon Callen

## COMMITTEE CHAIRMEN

---

<u>Advertising</u>	Kent Scribner
<u>Advisory</u>	Kent Crisler Jon Callen
<u>Annual Banquet</u>	Bob Bayer
<u>Budget Committee</u>	Bob Bayer
<u>Bulletin</u>	Rebecca Radford
<u>Continuing Education</u>	Robert Cowdery
<u>Distinguished Awards</u>	Kent Scribner
<u>Environmental</u>	Kent Matson
<u>Field Trip</u>	Larry Skelton
<u>Fishing Tournament</u>	Randy Teter
<u>Future Plans</u>	Ernie Morrison
<u>Golf</u>	David Barker
<u>Historian</u>	Larry Skelton
<u>Investment</u>	Bob Bayer
<u>Library</u>	Roger Martin Ted Jochems
<u>Membership</u>	Larry Friend
<u>Nomenclature</u>	John H. Morrison, III
<u>Picnic</u>	Wes Hansen
<u>Public Relations</u>	Robert Cowdery
<u>Shooting Tournament</u>	Larry Richardson
<u>Technical Program</u>	Brian Fisher
<u>Ticket Sales</u>	Bill Shepherd
Walters Digital	

## A.A.P.G. DELEGATES

---

Robert Cowdery 2013	Douglas Davis 2013
------------------------	-----------------------

## BULLETIN STAFF

---

<b>EDITOR</b> Rebecca Radford—Interim	(316) 264-2985
<b>ADVERTISING</b> Kent Scribner Stelbar Oil Corp.	(316) 264-8378
<b>PROFILES/MEMORIALS</b> Robert D. Cowdery Consultant	(316) 267-9030
<b>EXPLORATION HIGHLIGHTS</b> John H. Morrison, III Independent O&G	(316) 263-8281

<b>STATE SURVEY</b> Rex Buchanan KS Geological Survey	(785) 864-3965
---	----------------

<b>SOCIETY NEWS</b> KGS Library	(316) 265-8676
------------------------------------	----------------

<b>EDITOR EMERITUS</b> Wes Hansen	(316) 863-7313
--------------------------------------	----------------

## K.G.S. LIBRARY

---

**PHONE** 316-265-8676 **FAX** 316-265-1013  
email: [frontdesk@kgslibrary.com](mailto:frontdesk@kgslibrary.com) or  
Web: [www.kgslibrary.com](http://www.kgslibrary.com)

**LIBRARY MANAGER**  
Rebecca Radford 265-8676  
[manager@kgslibrary.com](mailto:manager@kgslibrary.com)

The KGS *Bulletin* is published bi-monthly by the Kansas Geological Society, with offices at 212 North Market, Wichita, Kansas 67202 Copyright 2013, The Kansas Geological Society. The purpose of the *Bulletin* is to keep members informed of the activities of the Society and to encourage the exchange and dissemination of technical information related to the Geological profession. Subscription to the *Bulletin* is by membership in the Kansas Geological Society. Limited permission is hereby given by the KGS to photocopy any material appearing in the *KGS BULLETIN* for the non-commercial purpose of scientific or educational advancement. The KGS, a scientific society, neither adopts nor supports positions of advocacy, we provide this and other forums for the presentation of diverse opinions and positions. Opinions presented in these publications do not reflect official positions of the Society.

**TRILOBITE  
TESTING INC**

Eleven Trucks Serving  
Kansas - Colorado - Texas  
Nebraska - Illinois

Slickline services using the same  
Alpine Electronic Pressure  
Guages as used on DST's

Back pressure testing (G1 & G2)  
DST's

**1-800-728-5369**

**FAX: 1-785-625-5620**  
**trilobite @eaglecom.net**

SHOPS LOCATED IN:

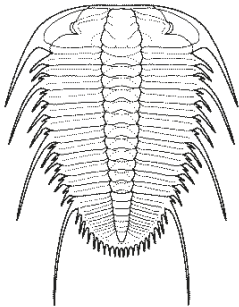
Hays, KS

Scott City, KS

Pratt, KS

Hugoton, KS

Clay City, IL



## ***CAN YOU NAME THE CRITTER?***

**Sponsored by Trilobite Testing, Inc.**

Is your paleo up to date?

If you know the name of the trilobite,  
submit your guess via e-mail to  
manager@kgslibrary.com

Remember that *Trilobite Testing* is  
sponsoring your efforts, so be sure to thank  
Paul Simpson the next time you see him.

**Bulletin committee members and PhD's in  
Paleontology are prohibited from entering.**



**Bring in your old maps,  
we have scanned several  
and they look great!**

**Our pricing Special:**

**Solid color @ \$4.00/sq. ft.**

**Line maps w/color @ \$3.00/sq. ft.**



**We've upgraded!!!**

**We now have a 44" Context Scanner**

**AND**

**A 44" Cannon Plotter**

# President's Letter

Dear Members,

I can't believe this will be my final letter to you as President of KGS. This has been a busy year, and very fulfilling. We have a great organization, filled with many able volunteers, and we are backed up all the way by Rebecca and her staff. Throughout this year, I've seen a lot of hard work turn in to outstanding events and programs that we can all be proud to be part of.

Since my last letter, we held our annual Shooting tournament at Lynnbrooke Sporting Clays. Larry Richardson and his committee did a great job, and everyone enjoyed the beautiful weather and all of the door prizes. Thanks to the generosity of the sponsors, no one went home without a prize.

The AAPG Mid-Continent Section meeting has come and gone, and I believe it was one of the best run conventions I've ever been to. Doug Davis and his committee had to work a lot of magic to pull it off, but they did an outstanding job. It was really great to see so many Geo-scientists in one place, and the knowledge that was shared was overwhelming but cohesive. I especially want to thank Marty Dubois and all of his crew for putting on the core workshop, and Sal Mazzullo and crew for putting on the Mississippian Symposium. It was a lot of work, but worth it. Of course I need to thank all of our generous sponsors. I hope those of you who were able to attend took away as much as I did. Great memories, new concepts and a reinforcement of what a great geologic province the Mid-Continent is.

Since the last Bulletin, our building committee has determined that our best course of action for the short term is to renew our lease for 3 more years at the Landmark Square building. The new landlord is giving us a very favorable rate, and adding a meeting room on the 4<sup>th</sup> floor, where we can hold tech talks, social events etc. We have asked for additional space to expand the library, and hope to be able to expand in the very near future. We will be buying some new equipment for the library before the end of the year, so watch for improvements.

I thought when I became President at the beginning of the year that we would be getting ready to move in to a new building of our own by the end of the year. We got close, but it'll take more time to complete this task than one year. I plan to remain on the building committee, and hope that we can work out a solid plan to build a new building before the new lease runs out in 3 years.

I've certainly enjoyed working with all of the KGS staff and the boards of both the KGS and KGF this year, as well as all of the committees. It's been a real privilege to serve as President of this fine Society, and I hope that we continue to meet the challenges of the future as well as we have in 2013.

Respectfully Submitted,  
Dave Clothier—President 2013





KANSAS STATE UNIVERSITY

**GEOLOGY**  
DEPARTMENT

**GRADUATE EDUCATION**  
**for active professionals**

Through:                      Leading to:  
Workshops                      Academic credits  
Field Trips                      Certificates (pending)  
Distance Education              M.S. degree

With specializations in:  
Petroleum Geology  
Groundwater  
Exploration Geophysics  
Environmental Geochemistry

Information:  
KSU Continuing Education: [www.dce.ksu.edu](http://www.dce.ksu.edu)  
KSU Geology Department: [www.ksu.edu/geology](http://www.ksu.edu/geology)  
KSU Graduate School: [www.ksu.edu/grad](http://www.ksu.edu/grad)  
or e-mail George Clark, interim dept. head: [grc@ksu.edu](mailto:grc@ksu.edu)

**ADVERTISER'S DIRECTORY**

	<i>page</i>
Allied Cementing Company, Inc	23
American Energies Corp. Nitrogen Rejection	12
Breckenridge Exploration Company	17
Duke Drilling	23
GeoCare Services AAPG	13
Kansas Geological Foundation	22
Kansas State University	8
Lockhart Geophysical	23
Lone Star Geophysical Surveys	18
MJ Systems	21
MBC Well logging	23
Murfin Drilling Company, Inc	23
Neuralog	17
PARAGON Geophysical Services, Inc	13
Pratt Well Service	17
Professional Directory	19-20
Sterling Seismic Services	11
Sunrise Oilfield Supply	23
TGS-NOPEC Geophysical Company	2
Tomcat Drilling	23
TRES Management	12
Trilobite Testing	6
Walters Digital Library	8 & 17
Weatherford	27
Well Enhancement Services	12

Log in to  
Walters Digital Library  
At  
[www.kgslibrary.com](http://www.kgslibrary.com)

Log in as our guest  
and see the Society's Database

A convenient way to see what  
you might want to order!  
Call or email your order to:  
316-265-8676  
[frontdesk@kgslibrary.com](mailto:frontdesk@kgslibrary.com)

**ADVERTISER'S RATES: 2013**

Full Page	B&W	Color
6 issues	\$2,000	\$2,500
3 issues	\$1,080	\$1,325
1 issue	\$480	\$525
<b>1/2 Page</b>		
6 issues	\$1,000	\$1,500
3 issues	\$540	\$825
1 issue	\$225	\$350
<b>1/4 Page</b>		
6 issues	\$600	\$900
3 issues	\$325	\$525
1 issue	\$150	\$250
<b>1/8 Page</b>		
6 issues	\$300	\$500
3 issues	\$175	\$325
1 issue	\$75	\$185
<b>Professional Ad (Business Card)</b>		
6 issues	\$90	\$180

*For one-time ads, call Rebecca at 316-265-8676*



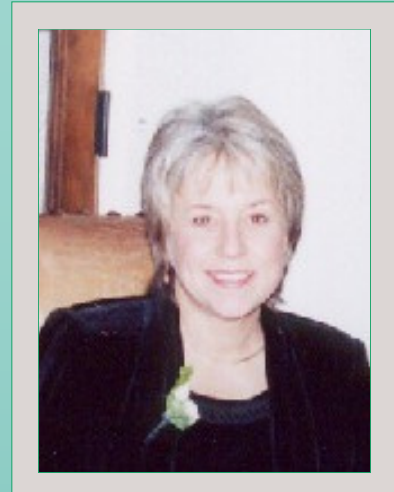
# From The Manager

Dear Members,

Wow, another year just flew by. Where did time go? I think most people have remained very busy in the oil patch this year and we will hope that continues on in to 2014.

We just wrapped up the AAPG Mid-Continent Convention and it was one of the best ever, according to many participants. We had a very good turnout of registrants and I believe the Core Workshop that Marty DuBois and others put on was a big hit. Look for photos from the convention throughout this issue. A big thank you goes out to Doug Davis who chaired the entire convention. Well done Doug!

We also had a great shooting tournament this year out at Lynbrooke Sporting Clays. I think we had a record number of shooters this year and the prizes, as always, were fantastic! Thank you to Larry Richardson, Kent Crisler and others for a great day. Special thank you to Sharon Funk from Buckeye Corporation (pictured below) for helping out this year!



Now it's time to elect your new KGS Board of Directors. Candidates are featured starting on page 14. Thank you to all of you who accepted the run for office. Many say no, they don't have time but as all of us are pressed for time, we do want to thank those who will give a little time back to the Society.

Since this is the end of the year issue of the Bulletin, I like to take this time to thank the KGS Board for their support as well as my great staff! Without the KGS staff, many things would not have happened. You all have been great to work with!

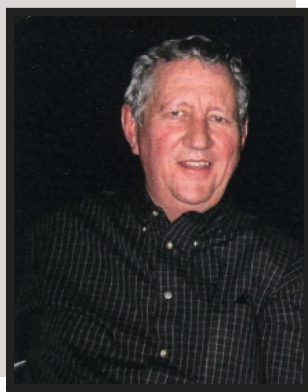
Respectfully submitted,  
*Rebecca Radford*  
Manager



Let Us Print Your Geo Reports  
And Save Your Time For Finding More Oil & Gas  
Top Quality Color Printing For Our Membership

Email your files to: [kgsorders@gmail.com](mailto:kgsorders@gmail.com)

# Memorials



**Micheal "Mike" S. Mitchell**, 65, Petroleum Geologist, passed away on Wednesday, September 25, 2013. Memorial service was 10:00 am Tuesday, October 1, 2013 at Chapel Hill United Methodist Church. He is preceded in death by his father Stanley. Survivors include his wife of 43 years, Karon; sons, Chris (Jill) Mitchell, Jason (Kari) Mitchell; grandchildren, Ethan, Kylie, McKenzie, Logan, Brynne; mother, Thelma and husband Bill Smith, all of Wichita; brother Greg (Cyndi) Mitchell of Union, MO; sister, Deborah (Jim) Gibbs of Rose Hill; sister-in-law, Janet (Paul) Malcom of Wichita and many nieces and nephews. Mike was a long time member of the Kansas Geological Society and a supporter of Wichita State University Geology and their students. Memorials have been established with Smile Train, P.O. Box, 96231 Washington, DC 20090 and Union Rescue Mission, 2800 N Hillside, Wichita, KS 67219. Downing and Lahey East Mortuary. Tributes may be sent to the family via [www.dlwichita.com](http://www.dlwichita.com)



**Dick Rowland**—This memorial will examine the life of another of the fine cadre of geologists who were members of the Kansas Geological Society. Dick was born in Hutchinson Kansas in 1932 and passed away in September 2013. He attended elementary, Jr. High and High School in Hutchinson. After high school, he attended Hutchinson Jr. College for 2 years.

In 1953 he married Karen Reese also of Hutchinson. And to this union was born one child Katie Young who has a son, Brandon. Dick was drafted in 1953 was stationed for all of his military career at Ft. Eustis, Virginia and while there he reached the grade of Corporal. He completed his degree in Petroleum Geology at Kansas State in 1956.

Dick's professional career included employment by Kansas Corporation Commission, Petroleum Inc., and Raymond Oil. In 1971 he retired from Raymond Oil and farmed for two years at Brookfield, Missouri. He then returned to employment at Raymond Oil. After retiring again he worked as a Consulting Geologist until 1988 when he moved to Arizona. Starting at a very early age, Dick had enjoyed motorcycles and except for a very short period of three months had owned one. From 1980 until 1996 the Rowland's owned a home in Baha, Mexico. Besides trips to Mexico the Rowlands enjoyed cruises to various areas including Alaska and the Caribbean. In addition to travel, Dick enjoyed golfing and making new friends. Professionally Dick maintained his membership in the Kansas Geological Society. He was also a member of SIPES, American Legion, Elks, Westlink Suburbanites and the Friday Night Board. Dick is survived by his wife, Karen, daughter Katie Young of Wichita, and grandson Brandon.

**Save This Date**

**KGS Annual Banquet**

**Friday evening  
January 24th**



## **Kansas Geological Foundation Video / DVD Collection**

The KGF has an extensive collection of videos available for check-out at no charge.

Only pay for shipping back.

These are ideal for classroom or general public viewing.

See the web for titles & descriptions  
[www.kgfoundation.org](http://www.kgfoundation.org)

Call 316-265-8676

Ask for Janice to check out videos

*Experience, Integrity, Innovation...*



SEISMIC SERVICES, LTD.

[www.sterlingseismic.com](http://www.sterlingseismic.com)

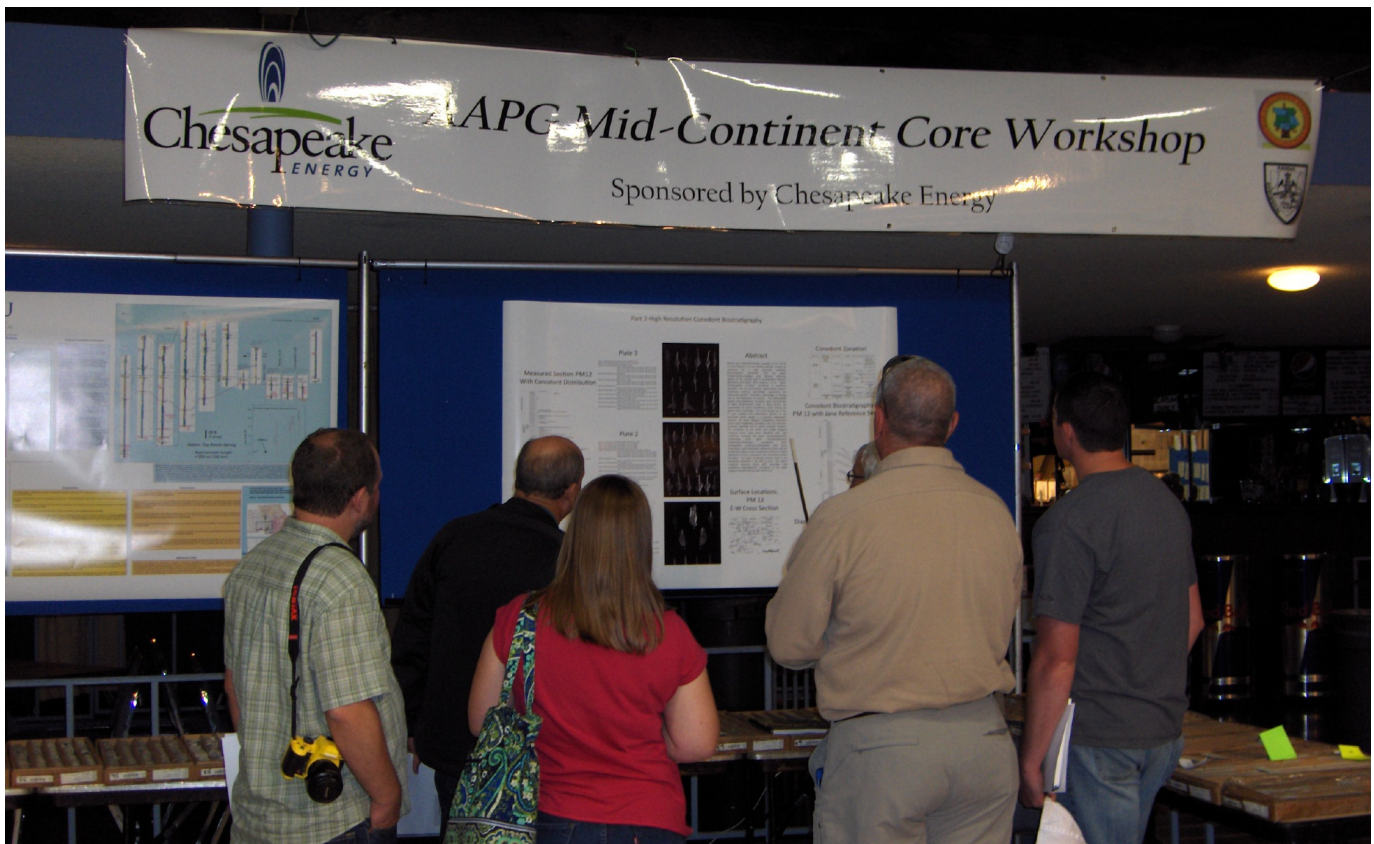
**Renegade Seismic Studio Refraction Statics  
Z-White Spectral Enhancement  
Tsunami Pre-Stack Time Migration**

Projects from one square mile "Postage Stamp" 3Ds to the 1,100 square mile nine 3D merge through PSTM we completed in 2006, no project is too small or too big. All projects are given the same attention to detail that we have become known for.

**Structural or stratigraphic, we've got the experience  
to provide you with a superior dataset.**



**303-347-9011**



## WOULD YOU LIKE TO INCREASE YOUR PRODUCTION AT A FRACTION OF THE COST OF HORIZONTAL DRILLING?



**Well Enhancement Services, LLC** is jetting laterals utilizing new technology and coiled tubing. We now have the ability to place hundreds of gallons of acid hundreds of feet away from the well bore. This allows us to not only enhance existing production but to produce reserves previously unreachable. It has established itself by repeatedly increasing production in both new and existing wells. Contact us for more information, questions or to schedule your next well with **WES**.



*“Tap into success.....with WES”*

### Please Contact Us:

Phone: (785) 625-5155

Fax: (785) 625-4151

Field: (785) 259-4638

wesofhays@hotmail.com  
Box 87, Schoenchen, KS 67667



MANAGEMENT INC.

7011 North Robinson  
Oklahoma City, OK 73116

405-842-7888 Phone • 405-842-7885 Fax

www.tresmanagement.com  
Email: tres@tresmanagement.com

Providing engineering, planning, and site supervision services for all phases of the oil & gas operations:  
Drilling, completion, workover, and facilities

Current activity includes providing engineering and supervision on horizontal projects in the Mid-Continent, Rocky Mountain, and Gulf Coast regions.

# WANTED

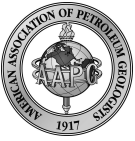


## LOW BTU GAS to Buy or Treat

www.NitrogenRejectionUnit.com



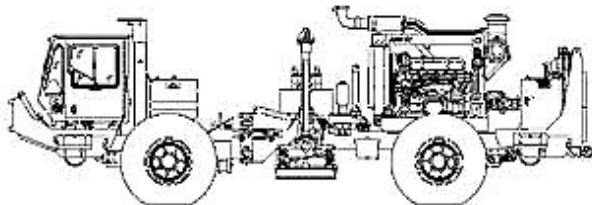
American Energies Corporation  
316-263-5785



Security for AAPG Members  
& Their Families  
Through Group Insurance

*Life  
Health  
Dental  
Disability  
Auto and Homeowner  
Supplemental Plans*

AAPG's  
GeoCare Benefits Insurance Program  
P. O. Box 9159  
Phoenix, AZ 85068-9159  
800-337-3140  
E-mail: [geocarebenefits@agia.com](mailto:geocarebenefits@agia.com)  
[www.geocarebenefits.com](http://www.geocarebenefits.com)



~The TOP CHOICE for 3D SEISMIC~

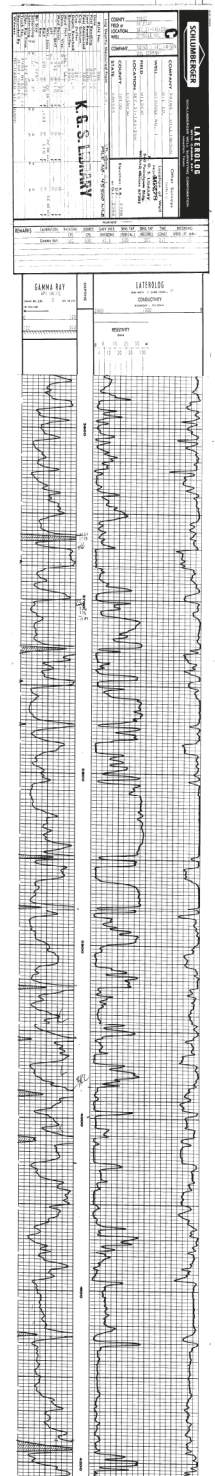
John H Beury III ~ Pres John Aguilar ~ Op. Mgr.

PHONE (316) 636 - 5552 FAX (316) 636 - 5572

3500 N. Rock Rd., Bldg 800, Suite B  
Wichita, KS 67226

[paragon@parangongeo.com](mailto:paragon@parangongeo.com)

*The KGS Library is pleased to  
announce a new service*



Creating  
LAS files  
from our logs  
or yours

**\$20.00 per  
curve!!**

Quick  
turn-around

Send us your log file  
or tell us which of  
ours you would like  
converted.

**316-256-8676**

The Kansas Geological Society maintains its ownership and  
copyright when converting library log files to LAS

## Meet The Candidates

### President Elect 2014—President 2015



**Robert P. Bayer II**



**Frank Mize**

**Education:**

B.S. Agricultural Economics, 1980, Kansas State University  
B. S. Geology, 1985, Wichita State University  
Graduate Studies: Environmental Engineering, KU

**Professional Experience:**

Petroleum Geologist, Lario Oil & Gas Co., 2007-Present  
Bayer Geological Consulting, 2005-2006  
Environmental Geologist, Geotechnical Services, 2003-2005  
Terracon, 1990-96 & 1997-98  
Great Guns, 1985-1986  
Production Geologist, Murfin Drilling Company, 1984-1985

**Professional Affiliations:**

Kansas Geological Society  
AAPG  
KS Licensed Geologist #607

**KGS Board and Committees:**

Banquet Chair 2010, 2011, 2012  
KGS Board Secretary 2012  
KGS Board Treasurer 2013

**Education:** BS Geology, Kansas State University 1976

**Professional Experience:** Exploitation Geologist/ Marathon Oil Company; District Geologist/Petroleum, Inc; Exploration Manager/Bankoff Oil Company; President, FaB Environmental, Inc.

**Professional Affiliations:** 36 year member KGS, 35 year member AAPG; Past Vice President/President, Kansas Well Logging Society/local chapter of the SPWLA; Licensed Geologist/KS #365

**KGS Board and Committees:** Former Director/KGS; served as Picnic chairman, & multiple years as golf tournament chairman.

**Short Bio:** Frank divides his consulting time these days between the gas storage industry (Class 1 Non-Haz wells, salt cavern wells & Class 5 wells), and the tried and true oil & gas industry. He specializes in many computer applications such as: salt cavern modeling, subsurface mapping, well course design & presentation graphics. Frank also spends a great deal of time well watching, generating a full color digital geologic reports w/sample photos. He also generates and evaluates prospects.

## Meet The Candidates

### Secretary 2014—Tresurer 2015



**Ryan Dixon**

**Education:**

B.S. Geology, Wichita State University, 2007

**Professional Experience:**

Geologist, Dixon Energy Inc., 2007-Present  
Geotechnician—2004-2007

**Professional Affiliations:**

Kansas Geological Society  
AAPG

**KGS Board and Committees:**

KGS Board—Director 2011-2012  
Bob Slamal Memorial Type Log Committee  
Future Plans Committee



**Leah Kasten**

**Education:**

M.S. Earth, Environment and Physical Sciences, Wichita State University, 2008  
Secondary Science Teaching Certification, Wichita State University, 1994  
B.S. Geology, Wichita State University, 1982

**Professional Experience:**

CMX, Inc. 2010 – Current  
USD 259, Secondary Science, 1994-2010  
Consulting Geologist 1992-1993  
Ritchie Exploration, Inc. 1982-1992  
Gear Petroleum 1981-1982

**Professional Affiliations:**

AAPG  
Kansas Geological Society

**KGS Board and Committees:**

Speakers Bureau, 1992-1994

## Meet The Candidates Director At Large 2014 & 2015



**Christina Goodrich**

**Education:**

B.A. Geology, Wichita State University , 2011

**Professional Experience:**

Geologist, Lario Oil & Gas Company,  
2012-Present

Geologist, Trans Pacific Oil Corp., 2011-2012

Geotechnician, Trans Pacific Oil Corp.,  
2009-2011

**Professional Affiliations:**

Kansas Geological Society

AAPG



**Ted McHenry**

**Education:**

B.S. Geology 1990, Wichita State University  
M.S. Geology 1995 Wichita State University  
"Ecology of Mexico Rocks Patch Reef Complex,  
Belize CA." advisor Dr. Collette D. Burke

**Professional Experience:**

1988-91 GeoTech, Red Oak Energy, Wichita, Ks.  
Geology consultant, Molitor Oil INC, 1989 to  
present, Spivey, KS.

Senior Geologist, Levine Fricke, Elgin Ill 1995 to  
2000.

Consultant Geologist Levine Fricke Recon  
Tallahassee FL, 2000-2006.

Geologist Raymond Oil, Wichita KS 2006  
to present.

**Hobby:** Fishing



# Robert F. Walters Digital Library

## The most complete source for Kansas Data

**Log in as our Guest**  
**username: guest**  
**password: guest**

[www.kgslibrary.com](http://www.kgslibrary.com)

**316-265-8676**



### SEISMIC ACQUISITION

Check us out at [www.breckex.com](http://www.breckex.com)

Breckenridge Exploration Co., Inc.  
 Highway 180 E  
 P.O. Box 789  
 Breckenridge, TX 76424  
 Bus: (254) 559-7566

Denver Colorado Office  
 600 17th Street, Ste. 2800 S  
 Denver, Colorado 80202-5428  
 Bus: (303) 563-5301  
 Mob: (254) 559-0587

Sensible Seismic Acquisition in the Mid-Continent and the Rockies



**Neuralog**  
 Turning Paper Into Petroleum

**Bryan Mills**  
 Regional Sales Manager

### Solutions for Today's Geoscientists

- Scan, Print & Digitize - Logs & Maps
- Geological Interpretation
- Master E&P Data Management

1.281.240.2525

[bmills@neuralog.com](mailto:bmills@neuralog.com) · [www.neuralog.com](http://www.neuralog.com)



Kenneth C. Gates  
 President

Kevin C. Gates  
 Vice President

1-800-660-7974  
 Fax: 620-672-5902

Member KIOGA /AESG

Since 1946

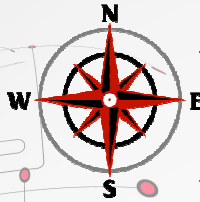
P.O. Box 847  
 Pratt, Kansas 67124

Equipment yard & field office:  
 1 3/4 miles North on Highway K-61 from 54 & K-61 Junction

- Experienced Crews
  - Rod & Tubing Service
  - Workover & Completions
  - Swab Tanks
  - Pole Masts-Single and Double Derricks
  - Air Foam Unit
  - Monitor & Water Well Drilling
  - Reverse Circulating Pump & Power Swivel Equipment
  - Statewide Oilfield Hauling
  - Environmental Cleanup
  - Vacuum Trucks/Water Trucks
  - Dirtwork-Dozers, Grader, Backhoe
- Hydrovac Excavation Service**
- Cleaning cattle guards
  - Mud tank cleaning
  - Potholing
  - Trenching
  - Pipeline Crossings

[www.prattwell.com](http://www.prattwell.com)

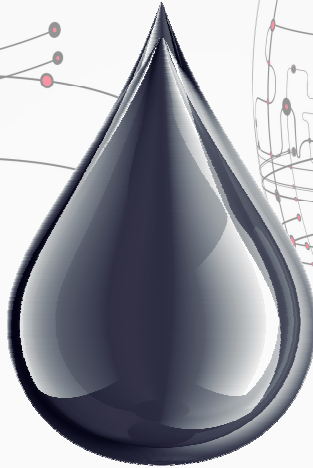




# LSGS

**LoneStar Geophysical Surveys**

It's Real Simple. It's Real Effective.



Locating every last drop.



**Superior Seismic Acquisition System**



**Data Recording 2D, 3D, 4D & VSP**



**AHV-IV™ Commander 364**



**Permitting Services**



**HSE Management System**



Submit a bid request online:

**[www.lstargeo.com](http://www.lstargeo.com)**



**Front-End Services**



**Shot Hole Drilling**



**Brush Clearing**



**Chainsaw Crews**



**Heliportable**

441 So. Fretz Avenue Edmond, Oklahoma 73003 (O) 405.726.8626 (F) 405.285.8521

[lsgsl@lstargeo.com](mailto:lsgsl@lstargeo.com)

# PROFESSIONAL DIRECTORY

**Kirk Rundle**  
**Consulting Geophysicist**  
*3D Seismic Design, Acquisition to Processing QC,  
 Interpretation and Analysis, Subsurface Integration*  
 7340 W. 21st. N., Ste. 100  
 Wichita, Kansas 67205

Office: 316-721-1421 Fax: 316-721-1843  
 Email: kirk@rundlegeo.com

**ROGER L. MARTIN**  
*Independent Petroleum Geologist*  
 200 E 1st St, Ste 405, Wichita, KS 67202

Office 316-833-2722 Cell: 316-250-6970  
 KS Field Cell: 316-655-1227  
 Fax: 316-425-3829  
 Email: rogermartingeo@yahoo.com

  
**GeoCertified, LLC**  
*Professional Geological Services  
 Hydrocarbon Detectors and Geologist Onsite 24/7*

Phone: (913) 441-2311 • Cell: (913) 544-7527  
 www.geocertified.com

**ALFRED JAMES III**  
**Petroleum Geologist**  
 Kansas - Colorado - Utah

200 W. Douglas, Ste. 525, Wichita, Kansas 67202

SIPES # 1111  
 Office (316) 267-7592  
 alfred.james55@yahoo.com

**KOGER**  
 Satellite Data Processing and Analysis  
 Oil & Gas Exploration

Consulting David G. Koger  
 Expert Witness 3152 Waits • Ft. Worth, TX  
 Training & Seminars USA 76109-2330  
 www.davekoger.com 817-921-6825 (RITS)

**M. Bradford Rine**  
*Honorary Life Member—Kansas Geological Society*

*Licensed Geologist—KS, #204  
 Registered Professional Geologist—Wyo. # 189  
 Certified Geologist—A.A.P.G. # 2647  
 S.I.P.E.S. # 1584 S.P.E. #109833-4*

PROSPECT EVALUATION • PROSPECT GENERATION  
 WELLSITE SUPERVISION • EXPERT TESTIMONY • OPERATIONS  
 PROPERTY EVALUATION • RESERVOIR STUDIES  
 DRLG./COMP. CONSULTATION

Suite 415 Office: (316) 262-5418  
 100 S. Main Fax: (316) 264-1328  
 Wichita, KS 67202 Cell: (316) 250-5941

**WESLEY D. HANSEN**  
**Consulting Geologist**  
 Well site Supervision • Geologic Studies  
 212 N. Market, Ste 257  
 Wichita, Kansas 67202  
 Off: (316) 263-7313  
 Mobile: (316) 772-6188  
 whansen4651@sbcglobal.net

  
 Paul Gunzelman  
 President/Geologist

Wichita, Kansas 316.634.6026  
 email p.gun@sbcglobal.net

  
**KEVIN L. KESSLER**  
 INDEPENDENT/CONSULTING PETROLEUM GEOLOGIST

WELLSITE SUPERVISION • GEOLOGIC RESEARCH  
 OIL & GAS PROSPECTS  
 KANSAS & EASTERN COLORADO

MAILING ADDRESS PHONE  
 1199 N. PONDEROSA RD. RES.: (316) 522-7338  
 BELLE PLAINE, KS 67013 MOBILE: (316) 706-6636  
 EMAIL: KKESSLER1199@AOL.COM

**MELLAND ENGINEERING, INC.**  
*Petroleum Engineering & Geological Consulting*


**James E. Melland, P.E., P.G.**  
 President  
 Office: (620) 241-4621 Fax: (620) 241-2621

jamesm@mellandengineering.com  
 www.mellandengineering.com

P.O. Box 841, McPherson, KS 67460

**KGJ ENTERPRISES**  
 Contract Oil & Gas Accounting &  
 Office Management

Kathryn G. James, MBA (316) 775-0954  
 4278 SW 100th ST. (316) 250-5989  
 Augusta, KS 67010 kgjames@onemain.com

  
**Steve Van Buskirk**  
**Petroleum Geologist**  
**Van Buskirk Geo-Consulting**

15171 Ridgfield Ln Home: 719-487-8297  
 Colorado Springs, CO 80921 Cell: 719-393-2900  
 and 514 Rumsey Nextlevelinc@msn.com  
 Kiowa, KS 67070 Available for Well site work

*Blue Ribbon Drilling, LLC*

PO Box 279, Dewey, OK 74029

Phone and Fax: 918-534-2322

John's Cell Phone: 918-440-9639

Larry's Cell Phone: 918-440-9638

Jeff's Cell Phone: 918-440-9647

Email: [johnroutree@bratco-operating.com](mailto:johnroutree@bratco-operating.com)



**Geotech & Design Services**

7171 Highway 6 North, #202

Houston, Texas 77095

Data digitizing, drafting & computer graphics

Tel: (281) 858-7100

Fax: (281) 500-8534

[heather.wilson@geotechmap.net](mailto:heather.wilson@geotechmap.net)

**Heather Wilson**  
Account Manager

[www.geotechmap.net](http://www.geotechmap.net)

**We Invite You  
To join**

*Kansas  
Geological  
Foundation*

*\$50.00 membership is  
tax deductible*

*Call 316-265-8676*

*Or send checks to:  
Kansas Geological Foundation  
212 N. Market, Ste. 100  
Wichita, KS 67202*

**Notices !!**

**KGS Library Holiday Hours:**

**Closed Nov. 28 & 29**

**Closed Dec. 24 & 25**

**Closed Jan. 1**

**ALSO**

**KGS Annual Business Meeting  
will be held immediately following  
the Dec. 17th tech talk**

**The Following Are For Sale**

*Kansas Completion Cards:  
Several sets (call for more information)*

*Oklahoma Completion Cards:  
2 sets—entire state*

*Nebraska Completion Cards—West ranges*

*New Mexico Completion Cards*

*North Dakota Completion Cards*

*Utah Completion Cards*

*Microfiche Electric Logs  
Kansas  
Oklahoma  
Texas*

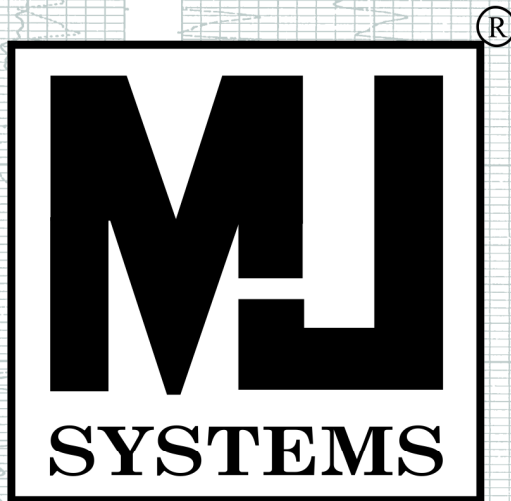
**Geological Office Furniture:**

- 8-drawer completion card cabinets—21 available
- 7-drawer cabinets—10 available
- Map cabinets—metal—2 available
- Map racks—different sizes—6 available

**Call: 316-265-8676**

**Ask for Ted**

Photos from AAPG Mid-Continent Meeting  
Held in Wichita Oct. 12-15



*Logs Since 1971*

[www.mjlogs.com](http://www.mjlogs.com)

**6 MILLION LOGS**

**DEPTH REGISTERED**

**INTERNET  
DOWNLOADS**

**ONLINE  
SEARCH**

**SEARCH AND FILTER BY DEPTH**

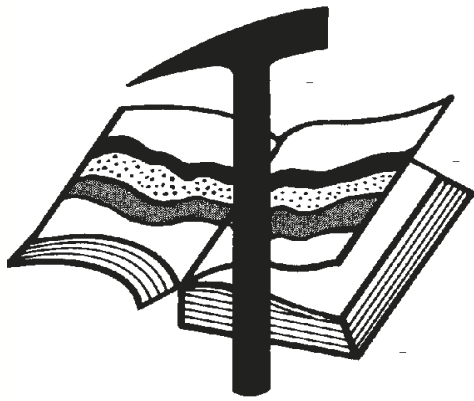
**OWN THE LOGS**

**LogSleuth Software**

**CLUB WEB**

**WEB SITE CATALOGUE**

**1-800-310-6451**



# Kansas Geological Foundation

Web Site: [www.kgfoundation.org](http://www.kgfoundation.org)

**212 North Market  
Wichita, Kansas 67202**

A not-for-profit educational and scientific corporation

## **GOALS:**

- promote geology and earth science
- preserve geological records
- establish memorials and endowments
- support field trips and seminars
- financial aid and grants to students

**PLEASE HELP SUPPORT THE FOUNDATION**

## **Kansas Geological Foundation Services**

The Kansas Geological Foundation provides the following services as a part of the organization's commitment to educate the public regarding earth science.

### **Speaker's Bureau**

A list of speakers available to talk about various aspects of geology may be obtained by contacting Janice Bright at the KGS Library, 265-8676. This service is free to the public.

### **DVD/Videotape Library**

The KGF maintains a DVD & videotape library focused primarily on the various fields of earth science. These tapes may be checked out without charge by the public. To obtain a list of tapes, please contact the KGS Library, 212 N. Market, Ste. 100, Wichita, KS 67202, or call Janice Bright at 265-8676.

The Kansas Geological Foundation was founded in March, 1989 as a not-for-profit corporation under the guidelines of section 501(c)(3) of the tax code to provide individuals and corporations the opportunity to further the science of geology. It is dedicated to providing charitable, scientific, literary and educational opportunities in the field of geology for the professional geologist as well as the general public.

KGF can receive in-kind donations through which the donor may receive a tax deduction. Of equal importance, the KGF provides the financial resources to sort, process and file this data at the KGS library. If you have a donation to make, please contact the KGF at 265-8676.

Your tax-deductible membership donation helps to defray the cost of processing donations and to support public education programs about the science of geology. Annual membership begins at \$50.00 per year. Donations of \$100.00 or more are encouraged through the following clubs:

<b>Century Club</b>	\$ 100 to \$ 499
<b>\$500 Club</b>	\$ 500 to \$ 999
<b>Millennium Club</b>	\$1000 to \$5000
<b>President's Club</b>	\$5000 and over

WESTERN KANSAS  
SOUTHERN NEBRASKA



EASTERN COLORADO  
OKLAHOMA & TEXAS PANHANDLES

**10 Drilling Rigs**

**10 Well Service Rigs & Roustabout Services**

For contract information, please contact:  
Blaine Miller / Drilling Department  
316-858-8607 (Direct) or 316-267-3241

For contract information, please contact:  
Alan Hays, Well Service Sprvsr.  
785-421-2103 or 785-567-8739 (cell)

250 N. Water #300—Wichita, KS 67202

East Highway 24—Hill City, KS 67642

**DUKE**

**DRILLING COMPANY**

**ROTARY DRILLING CONTRACTOR**

620 Hubbard PO Box 823  
Great Bend, KS 67530  
Phone 620-793-8366

100 S. Main, Ste. 410,  
Wichita, KS 67202  
Phone 316-267-1331  
Fax 316-267-5180

**TOMCAT DRILLING**

TIMOTHY J. SANDERS  
tjsanders@tomcat.kscoxmail.com  
CELL (316) 259-1652

WWW.TOMCATDRILLING.COM

**CORPORATE OFFICE**  
8301 E. 21ST NORTH, SUITE 360  
WICHITA, KANSAS 67206  
PHONE (316) 262-8554  
FAX (316) 267-0749

**FIELD OFFICE AND YARD**  
225 NW HIGHWAY 270  
WOODWARD, OKLAHOMA 73801  
PHONE (580) 254-3026  
FAX (580) 254-3028

5 ROTARY RIGS SERVING  
KANSAS, OKLAHOMA AND  
THE TEXAS PANHANDLE

Great Bend (620) 793-5861      Ness City (785) 798-3843      Medicine Lodge (620) 886-5926

**ALLIED CEMENTING CO., INC.**

Acidizing Available at Medicine Lodge District

Russell (785) 483-2627      Oakley (785) 672-3452

**LOCKHART GEOPHYSICAL**

2D & 3D Vibroseis Acquisition  
ARAM\*AIRES Seismic Recording System

1600 Broadway, Suite 1660 • Denver, CO 80202-4915  
(303) 592-5220 • info@lockhartgeo.com  
for complete information go to: www.lockhartgeo.com

**MBC**

WELL LOGGING & LEASING  
UNMANNED GAS DETECTORS  
MUD LOGGING  
CERTIFIED INSTRUMENT TECH  
SERVING THE KAN-O-TEC AREA SINCE 1990

AUSTIN GARNER      MARLA GARNER  
24-HOUR PHONE (620) 873-2953  
MEADE, KANSAS

**SUNRISE OILFIELD SUPPLY**

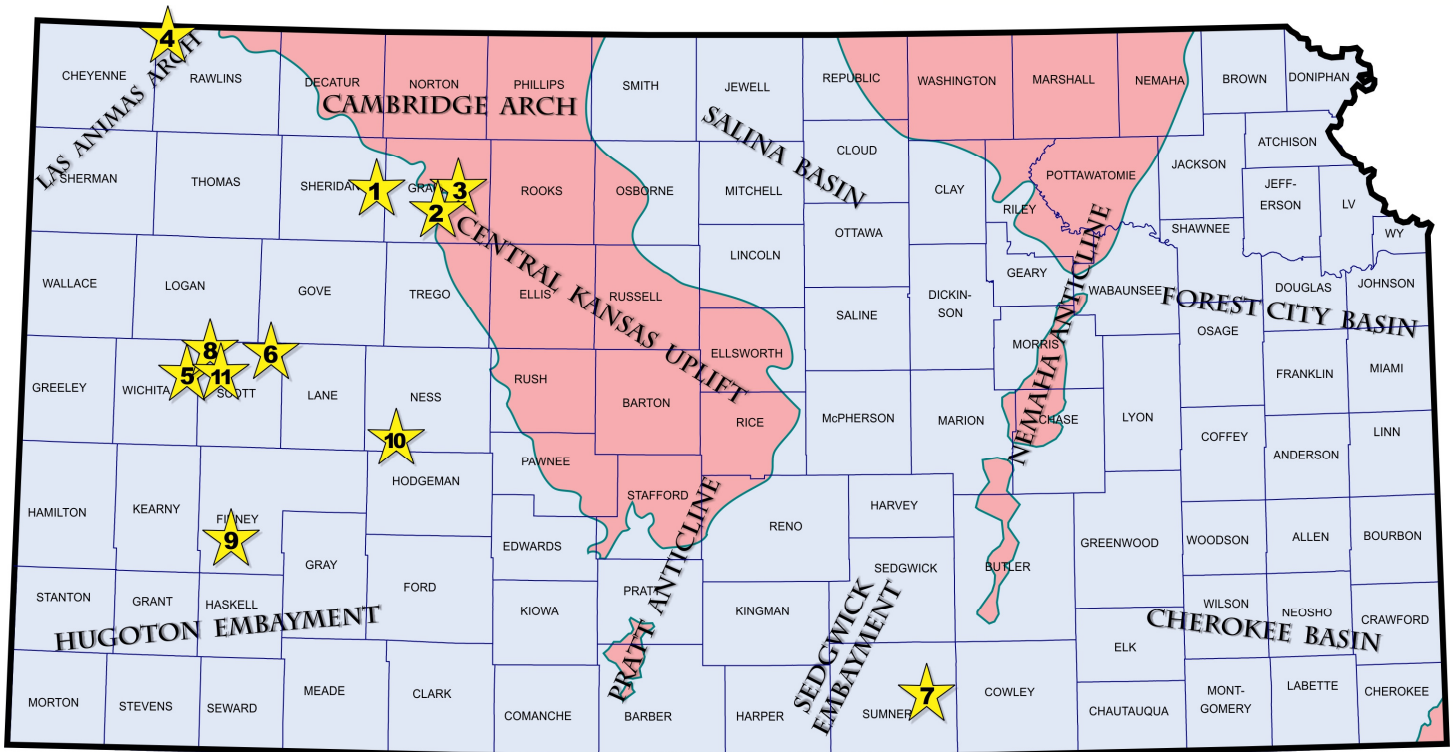
**FULL LINE SUPPLY STORE**  
With Pump Shop, New & Used  
Pipe, Equipment and Fittings  
Exclusive S-55 casing source

**STORES:**  
Chanute, KS 620-431-6500  
El Dorado, KS 316-321-9323  
Garden City, KS 877-976-1700  
Hays, KS 785-650-0199  
Hugoton, KS 620-428-6604  
Ness City, KS 800-589-5733  
Spivey, KS 620-532-5261  
McCook, NE 308-345-1542

**SALES OFFICES:**  
Wichita, KS 800-777-7672  
Great Bend, KS 316-792-3130  
Cell: 316-786-4255  
Denver, CO 303-319-6753  
Williston, ND 701-570-9255

# Exploration Highlights

By John H. Morrison, III  
Independent Oil & Gas



(1) **IA Operating, Inc.**, Wichita (KS), has discovered new Lansing-Kansas City oil deposits on a separated feature west of the Studley field in eastern **Sheridan** County. The 21-1 Archer (API 15-179-21328) is on pump making 45 barrels of oil per day, no water. The wildcat well was drilled in the NE NE SE of section 21- T8s- R26W, about two and one-half miles southwest of the city of Studley. The unnamed pool opener found the top of the Lansing formation at 3660 ft (-1169 kb). Pay zone was perforated from 3789 to 3793 ft. Logger's total depth is 3925 ft. Terry L. McLeod was wellsite geologist.

(2) **Downing-Nelson Oil Company, Inc.**, Hays (KS), has stepped-out nearly one and one-quarter miles from two established Lansing-Kansas City oil fields that have produced crude from the LKC zones since 1955 - the Mildrextor to the southeast and the Brush Creek to the west. The 1-3 Carl Quint (API 15-065-23915), spotted in the SW SE NE of section 3- T9s- R23W, was completed on May 27, 2013 for a daily production rate of 10 barrels of oil and 30 barrels of water. The **Graham** County well is producing oil from two sets of perforations from 3567 to 3572 ft and 3718 to 3724 ft. Top of the Lansing was called by geologist Ron Nelson at 3536 ft (-1330 kb). Discovery Drilling tools bottomed the well at a total depth of 3795 ft. The new unnamed oil field lies four and one-quarter miles south and one mile west of Hill City, Kansas.

(3) **H & C Oil Operating, Inc.**, Plainville (KS), has a new Lansing-Kansas City oil discovery in **Graham** County. The firm's 2-1 Griffith Unit (API 15-065-23965) is pumping an undisclosed amount of oil at site located in the NW SW SW of section 2- T8s- R22W, or three and one-half miles northwest of Bogue, Kansas. Marc Downing was wellsite geologist who studied rock cuttings to a total depth of 3770 ft. The new oil reserves were found nearly one and one-quarter miles east of established wells in the Harmony Southeast which has given up LKC oil since 1979. The new field has not been named.

(4) **BEREXCO, LLC**, Wichita (KS), has successfully completed their 1-22 Michael (API 15-153-20936) in **Rawlins** County to establish the new East Fork oil field about eleven miles northwest of Beardsley, Kansas. The wildcat well was drilled over two miles southeast of closest production the multipay Bermos field at site in the SW SE NE of section 22- T1s- R36W. The Michael discovery well is producing an undisclosed amount of oil from the Lansing-Kansas City formation. Since the well's completion in September, BEREXCO LLC and Murfin Drilling Company, Inc., also of Wichita, have combined to drill six development wells in the field and have staked three additional drill sites around the new find.

(5) **SandRidge Exploration and Production LLC**, Oklahoma City (OK), has completed a new oil discovery in **Wichita** County, western Kansas. The 1-4-RE JJARD 1735 (API 15-203-20059) has been completed as a Marmaton oil well in the N/2 SE SE of section 4- T17s- R35W. Operator washed-down the 1981 "show hole" to a total depth of 5100 ft, then deepened the hole to 5650 ft with no shows. Hole was plugged back to a depth of 5603 to open the Marmaton. Though perforations have not been disclosed, the original well had tested good shows from 4495 to 4502 ft and 4524 to 4534 ft. The new unnamed field lies nearly three miles northwest of the recently established Beaver Cliff West Field (est. 2012), or about eight miles north and one and one-half miles east of Marienthal, Kansas.

(6) **Ritchie Exploration, Inc.**, Wichita (KS), is producing an unknown amount of oil from Lansing-Kansas City formations at a wildcat well and new pool discovery in the northeastern corner of **Scott** County. The 1 Huseman 20-C (API 15-171-20949), located in the NW NW SW of section 20-16s-31W, was permitted as a Mississippian zone exploratory well at site about one and one-half miles northwest of Lansing-Kansas City and Cherokee oil production in the Michigan field. Marmaton production in the area



lies six miles away and closest known Mississippian pay lies nearly eleven miles away. The new Michigan North oil field is located about thirteen miles northeast of Scott City, Kansas.

(7) **Source Energy Midcon LLC**, Highlands Ranch (CO), has successfully completed a horizontal well one mile west of Simpson and Arbuckle oil production in the Metz field and well over a mile east of Mississippian oil production in the Pettigrew South field in eastern **Sumner** County. The 12-11-12-14H Neville (API 15-191-22679-0100), spotted on surface at 350 ft from the north line and 350 ft from the west line in section 12- T32s- R1E, is producing an unknown amount of oil from a lateral hole extending to a true measured depth of 7909 ft in a southerly direction in the SW/4 of the same section. The new Metz West field discovery is located about six miles east of Wellington, Kansas.

(8) **Shakespeare Oil Company, Inc.**, Salem (IL), has discovered Marmaton oil deposits at a wildcat site spotted nearly one mile northwest of their recently discovered Pence East oil field (est. 8/20/2012, Marmaton and Cherokee oil) in northwestern **Scott** County. The 1-34 Janzen (API 15-171-20956) was drilled to a total depth of 4895 ft by H D Drilling tools. Drill site is located in the NE SE NE of section 34- T16s- R34W, or nine miles north and one and one-half miles east of the small community of Modoc, Kansas. The new field has been named the Pence South.

(9) **OXY USA, Inc.**, Houston (TX), has discovered new oil reserves in the Morrow formation at the 1 Drussel 'E' (API 15-055-22213), NE SW SW in section 36- T25s- R33W, in **Finney** County. Operator discovered the oil deposits nearly two miles southwest of Mississippian Saint Louis oil production in the Staley West field. Closet Morrow production in the vicinity lies nearly four miles due south in the Beyer Southwest field in section 23- T356s- R33W. The well was drilled to a total depth of 5361 ft. The new Wolves oil field is situated about eight miles west of Garden City, Kansas.

(10) **Palomino Petroleum, Inc.**, Newton (KS), is producing oil from the Mississippian formation at the 1 Lewis-Fields (API 15-135-25617), located in the SW SE NE of section 6- T20s- R25W, in **Ness** County. The wildcat well is producing crude from perforated depth between 4490 to 4493 ft. Maverick Drilling rig bottomed the well at a total depth of 4630 ft. Field area lies one and one-quarter miles northeast of the Manteno Southwest field (est 1978, Mississippian oil), or seven miles south and 3 and one-half miles west of Laird, Kansas. The new oil field has been named Manteno South.

(11) **Landmark Resources, Inc.**, Houston (TX), has a dual pay oil discovery in west central **Scott** County. Marmaton and Cherokee formations are both producing crude at the 1-9 Decker (API 15-171-20936), SW SE SE in section 9- T17s- R34W, about six and one-half miles east of Modoc, Kansas. The new Capstone Southwest field discovery found the new reserves over two miles northwest of the Isbel North field (est. 2012, Marmaton oil). Murfin Drilling rig was used to drill the 4970 ft deep well.

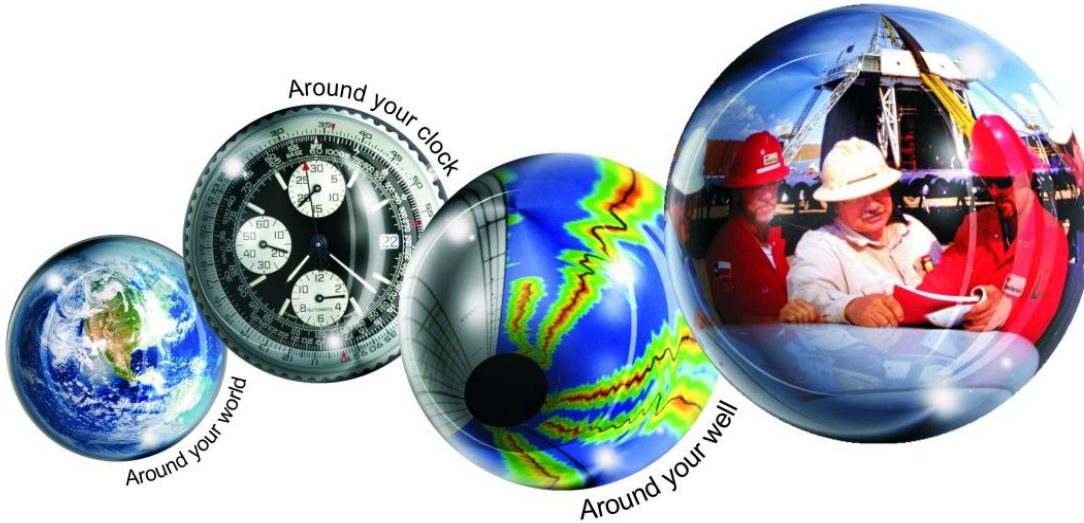
---

## CORE WORKSHOP at the AAPG Mid-Continent Section Meeting, sponsored by Chesapeake. A glimpse of just a little of the core that was laid out to view with presenters.



# Kansas Geological Foundation Memorials

KGS Member	Date Deceased	Memorial Established	KGS Member	Date Deceased	Memorial Established
Dan Bowles	09/89	1990	William A. Sladek	06/01	2001
John Brewer	10/89	1990	Harlan B. Dixon	06/01	2001
George Bruce	08/89	1990	Edward B. Donnelly	08/01	2001
Robert Gebhart	01/90	1990	Richard P. Nixon	02/02	2002
Ray Anderson, Jr.	11/90	1990	Robert W. Frensley	12/01	2002
Harold McNeil	03/91	1991	Gerald W. Zorger	01/02	2002
Millard W. Smith	08/91	1991	Don L. Calvin	03/02	2002
Clinton Engstrand	09/91	1991	Claud Sheats	02/02	2002
M.F. "Ted" Bear	10/91	1991	Merle Britting	2002	2002
James & Kathryn Gould	11/91	1991	Harold Trapp	11/02	2002
E. Gail Carpenter	06/91	1993	Donald M. Brown	11/02	2003
Benton Brooks	09/92	1992	Elwyn Nagel	03/03	2003
Robert C. Armstrong	01/93	1993	Robert Noll	09/03	2003
Nancy Lorenz	02/93	1993	Benny Singleton	09/03	2003
Norman R. Stewart	07/93	1993	Jay Dirks	2003	2003
Robert W. Watchous	12/93	1993	J. Mark Richardson	02/04	2004
J. George Klein	07/94	1994	John "Jack" Barwick	02/01	2004
Harold C.J. Terhune	01/95	1995	Richard Roby	03/04	2004
Carl Todd	01/95	1995	Ruth Bell Steinberg	2004	2004
Don R. Pate	03/95	1995	Gordon Keen	03/04	2004
R. James Gear	05/95	1995	Lloyd Tarrant	05/04	2004
Vernon Hess	06/95	1995	Robert J. "Rob" Dietterich	08/96	2004
E. K. Edmiston	06/95	1995	Mervyn Mace	12/04	2004
Jack Rine	07/95	1995	Donald Hoy Smith	04/05	2005
Lee Cornell	08/95	1995	Richard M. Foley	06/05	2005
John Graves	10/95	1995	Wayne Brinegar	06/05	2005
Wilson Rains	10/95	1995	Charles B. Moore	09/96	2005
Heber Beardmore, Jr.	09/96	1996	Jack Heathman	05/06	2006
Elmer "Lucky" Opfer	12/96	1996	Charles Kaiser	09/06	2006
Raymond M. Goodin	01/97	1997	Rod Sweetman	08/06	2006
Donald F. Moore	10/92	1997	Karl Becker	10/06	2006
Gerald J. Kathol	03/97	1997	Frank Hamlin	10/06	2006
James D. Davies	08/88	1997	Marvin Douglas	12/06	2006
R. Kenneth Smith	04/97	1997	Robert W. Hammond	04/07	2007
Robert L. Dilts	05/97	1997	Eldon Frazey	04/07	2007
Delmer L. Powers	06/72	1997	Pete Amstutz	05/07	2007
Gene Falkowski	11/97	1997	Charles Spradlin	05/07	2007
Arthur (Bill) Jacques	01/98	1998	Donald R. "Bob" Douglass	09/07	2007
Bus Woods	01/98	1998	Vincent Hiebsch	11/07	2007
Frank M. Brooks	03/98	1998	Glen C. Thrasher	03/08	2008
Robert F. Walters	04/98	1998	Peg Walters	06/08	2008
Stephen Powell	04/98	1998	Theodore "Ted" Sandberg	07/08	2008
Deane Jirrels	05/98	1998	James Ralstin	11/08	2008
William G. Iversen	07/98	1998	Earl Brandt	04/09	2009
Ann E. Watchous	08/98	1998	Walter DeLozier	05/09	2009
W.R. "Bill" Murfin	09/98	1998	Don D. Strong	01/10	2010
Donald L. Hellar	11/98	1998	John Stone	02/10	2010
Joseph E. Rakaskas	01/99	1999	Craig Caulk	03/10	2010
Charles W. Steincamp	02/99	1999	Joseph E. Moreland, Jr.	03/10	2010
Robert and Betty Glover	10/96	1998	Gene Garmon	03/10	2010
Howard E. Schwerdtfeger	11/98	1999	James F. Dilts	05/10	2010
W. W. "Brick" Wakefield	03/99	1999	Jerry Pike	05/10	2010
V. Richard Hoover	01/00	2000	Donald Hollar	06/10	2010
Warren E. Tomlinson	01/00	2000	Delbert Costa	08/10	2010
James A. Morris	01/00	2000	John Tanner	08/10	2010
Eric H. Jager	03/00	2000	William (Bill) Owen	09/10	2010
Kenneth W. Johnson	03/00	2000	Harold (Hal) Brown	10/10	2010
Dean C. Schaake	03/00	2000	Edmund G. Lorenz	11/10	2010
Fred S. Lillibridge	05/00	2000	Thomas E. Black	05/11	2011
Jerry A. Langrehr	07/00	2000	Wayne E. Walcher	07/11	2011
Clark A. Roach	07/00	2000	Henry F. Filson	07/11	2011
Floyd W. "Bud" Mallonee	10/00	2000	Thomas Ray	07/11	2011
Ralph W. Ruuwe	09/00	2000	Edgar E. Smith	09/11	2012
Robert L. Slamal	02/01	2001	Marilyn Messinger	06/13	2013
Jerold E. Jespenson	06/01	2001			



## All Around You

**Weatherford has always been driven by your needs.**

Now, with the addition of Precision Energy Services we're continuing to build a world of skills, services and technologies that revolve – and evolve – around you.

### The result?

An expanded global network of 25,000 people, 730 service bases and 87 manufacturing facilities in 100 countries.

This increased local knowledge and service is there to support you anywhere, anytime. From midday in the Middle East to midnight in the middle of nowhere.

And with greatly strengthened capabilities in the critical evaluation skills of directional drilling and wireline logging, we can do even more to improve the profitability and productivity of your wells.

To see how our sphere of services can work for you, visit [www.weatherford.com](http://www.weatherford.com) or contact either your Weatherford or former Precision Energy Services representative.


Drilling | Evaluation | Completion | Production | Intervention

© 2006 Weatherford International Ltd. All rights reserved. Incorporates proprietary and patented Weatherford technology.

**CHANGE SERVICE REQUESTED**

KGS BULLETIN  
 November—December 2013

**November 2013**

Sun	Mon	Tue	Wed	Thu	Fri	Sat
					1	2
3	4	5 Tech Talk	6	7	8	9
10	11	12 KGS Board	13	14	15	16
17	18	19 Tech Talk	20	21	22	23
24	25	26	27	28 	29 Library closed—Thanksgiving	30

**December 2013**

Sun	Mon	Tue	Wed	Thu	Fri	Sat
1	2 KGS Ballots Due	3 Tech Talk	4	5	6	7
8	9	10 KGS Board	11	12	13	14
15	16	17 Tech Talk & Annual Bus. Mtg. follows	18 	19	20	21
22	23	24 Library Closed Christmas	25	26	27	28
29	30	31	1 Library Closed 			